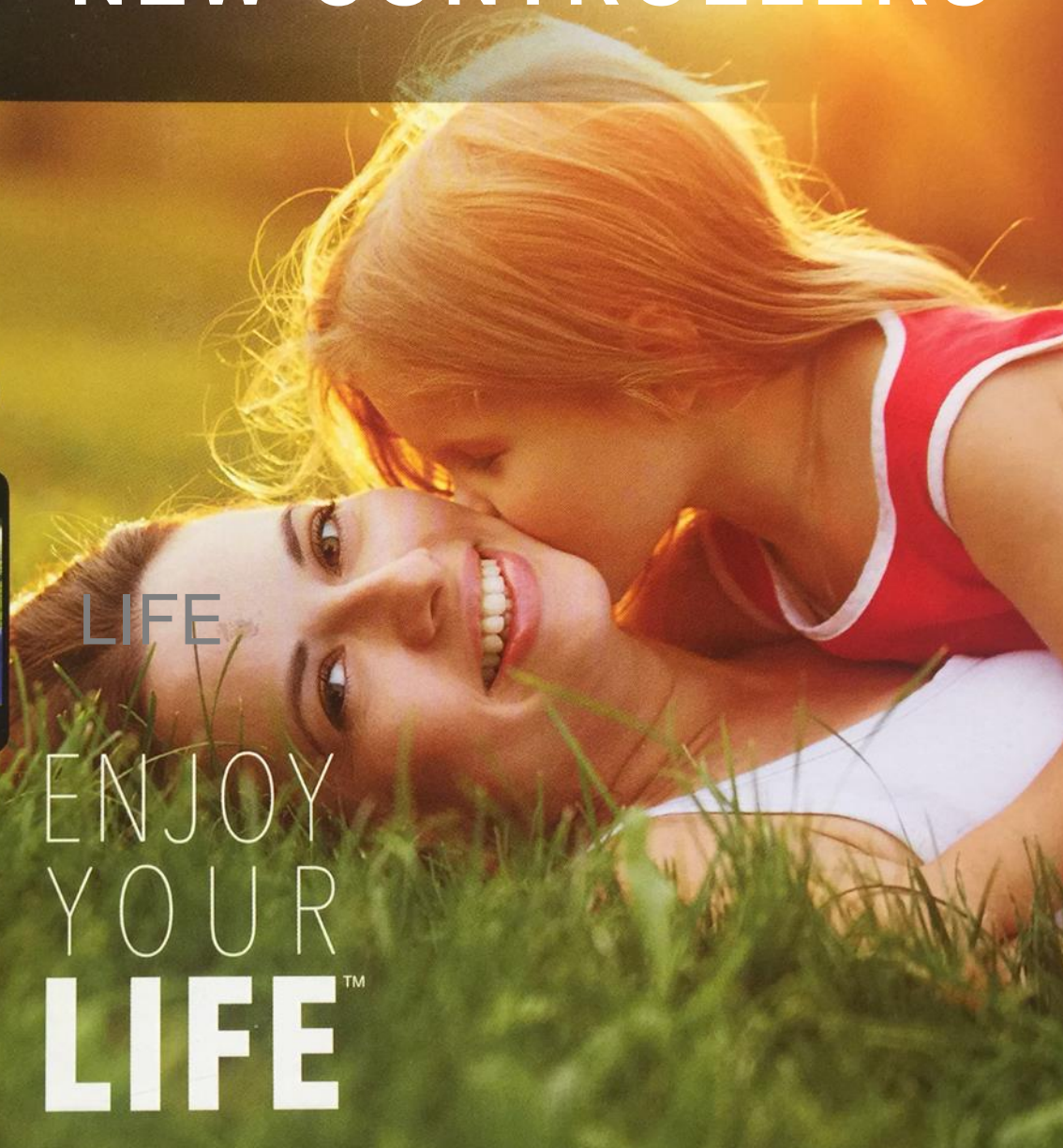


Irritrol®

NEW CONTROLLERS



LIFE
ENJOY
YOUR
LIFE™



EIMA 2018



Italy:
Installers
End-users



Portugal:
End-users



Spain:
Instalers/end-
users



France:
End-users

- Rain sensor
- multiple sensor connection
- Connection with smartphone, tablet
- Integration with other garden equipment
- Remote control > cloud based

- The size of the monitor
- Mechanical installation: wall mounting, connections
- Multilevel user interface: (rotary knob)
- Weather dust & insect proof
- Quality of materials (plastic)
- Buttons



NEW CONTROLLERS



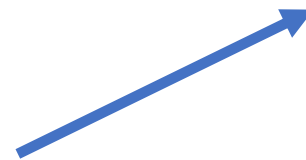
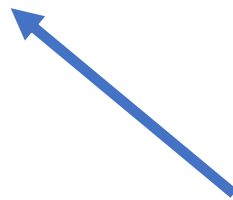
Life



Life Plus



Life DC



Irritrol[®]

LIFE DC
9VDC

Irritrol

DC CONTROLLERS

Junior DC, in offer



Life DC, **NO** LCD



 **Bluetooth**[®]

- **1,2,4** stations (IP68)
- **4** independent programs
- **3** start times per program
- Water budget from 0% to 200%
- Flexible irrigation programming:
 - e.g. Daily (12 start times per day)





Life DC

- Automatic, semi-automatic and manual start
- Rain sensor
- **Rain delay from 1 to 15 days or «Permanent»**
- Working temperature:
-10°C + 50°C

1 x 9V battery



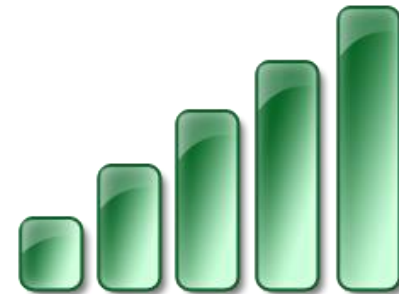
Output 9VDC latching

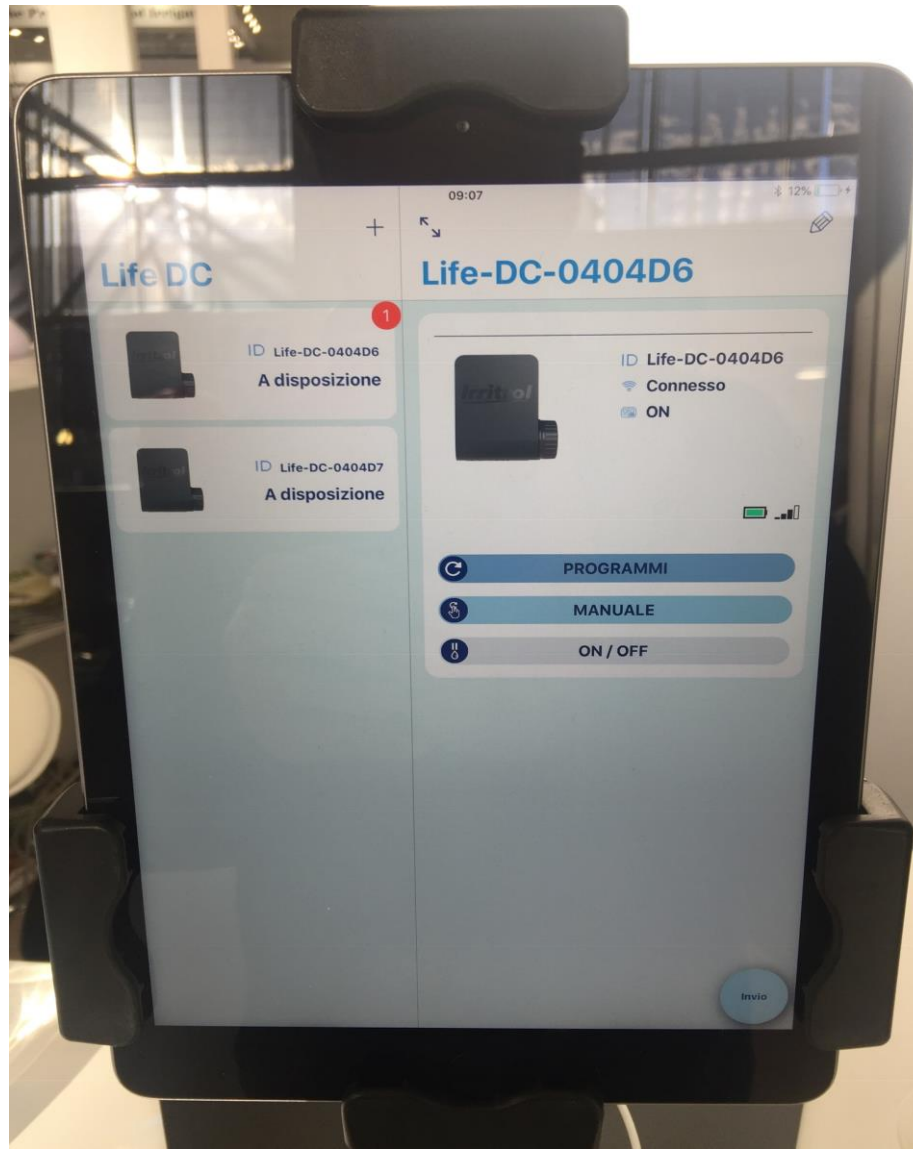


Life battery indicator



Signal strenght





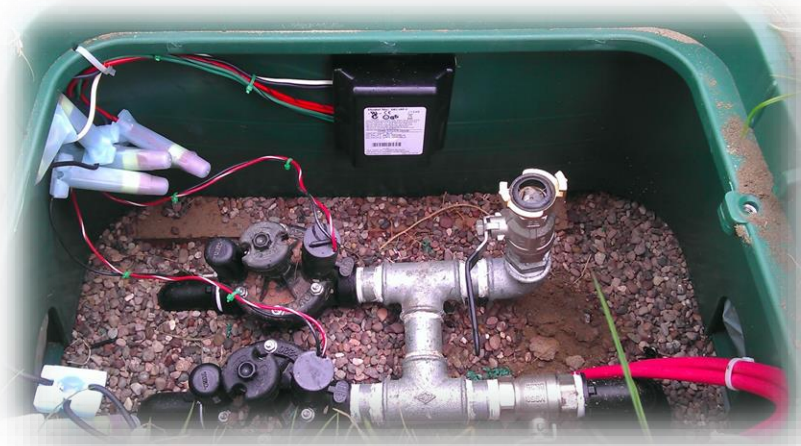
CONTROLLERS

24 VAC



CONTROLLERS – 24VAC

- Controller range:
 - **Life**
 - **Life Plus**
- Same programming module
- Same programming path
- Arm chair programming



Test program for stations
(hydraulic and electricity)



Water OFF button



Start / Stop button



Permanent memory
(programs)



No battery
(„Super Cap” –
time & date more than 24h)

Irritrol

Programming Panel



Monitor.
Easy to
read...

Programming.
Easy to
program...

Settings.
Easy to
set...

Navigation.
Easy to
play...

**USER-FRIENDLY for
ALL**



Programming Buttons

Moving into the menu

Help

Advanced programming

Increase/decrease

Electrical test/irrigation test



Start times

Watering days

Run times

Water budget





Controller's Connectivity



LIFE PLUS



LIFE



Wi-Fi MODULE



Wi-Fi local, LIFE

Wi-Fi IoT, LIFE PLUS





Back Module

*Life module

Irritrol[®]



AC Controllers

LIFE
&
LIFE PLUS

OUTDOOR
MODEL

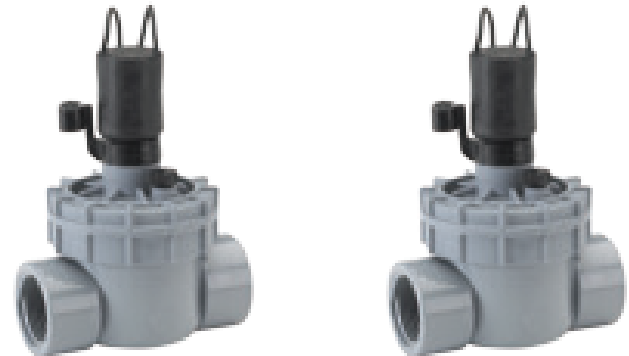
Irritrol[®]

LIFE

- 4,6,8 stations
- 2 independent programs
- 3 start times per program
- Local wi-fi ready (optional)
- Water budget from 0% to 200%
- Flexible programming method



- Stacking program
- Output power:
 - Max per station:
24 VAC (0,25 A)
 - Max total
(including MV control):
24 VAC (0,625 A)



Irritrol[®]

LIFE PLUS

- From 4 to 16 stations, base of 4 stations (indoor and outdoor)
- 4 independent programs (one can be set up as **loop program**)
- 6 start times per program
- IOT wi-fi ready (optional)
- Water budget from 0% to 200% or pre-set option
- **Possibility to work in m:h (up to 8h) or s:m (up to 8 min)**



- Pulse flow sensor input
- Flow sensor may be active when no valve is working
- Sensors may be managed in 5 different modes (Off, start, stop, skip, hold)



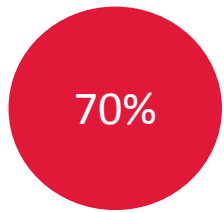
Output power:

- Max per station: 24 VAC (0,5 A)
- Max total (including MV control): 24 VAC (1 A)





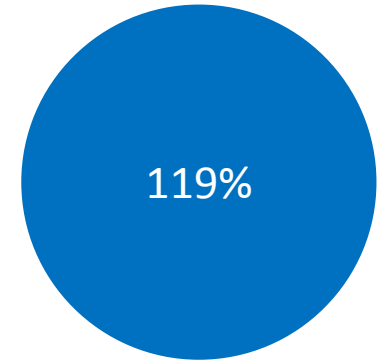
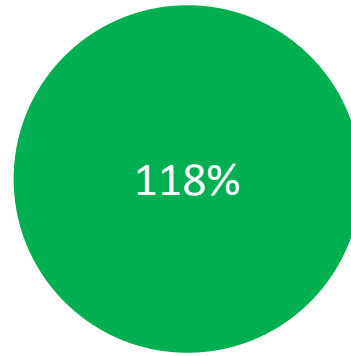
Cost for the whole range on stock*



Using 100%
modularity



Assembled models



* res-light comm (up to 16 stations), including wi-fi models or modules

Irritrol[®]

Irritrol[®]

For Professionals Only.[™]

Thank You